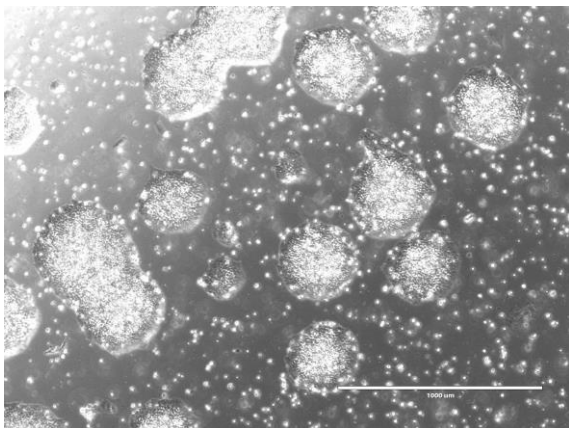
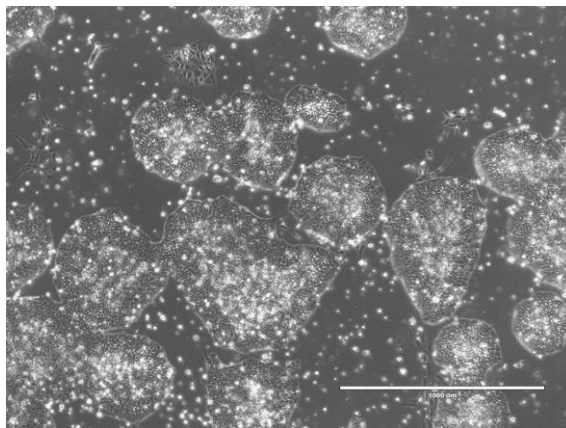


【 CiRA-j-1320 】 Morphology of iPSC colonies

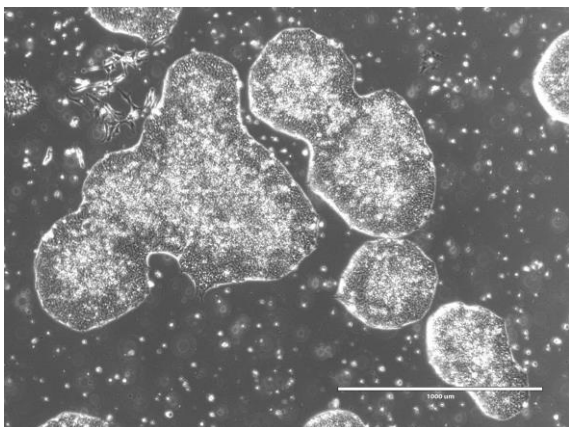
CiRA-j-1320-A: passage-3



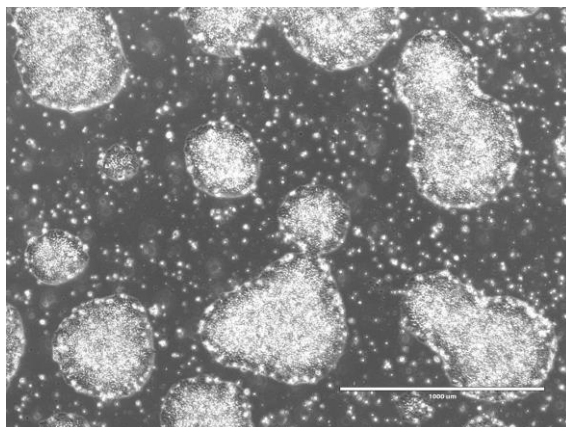
CiRA-j-1320-B: passage-3



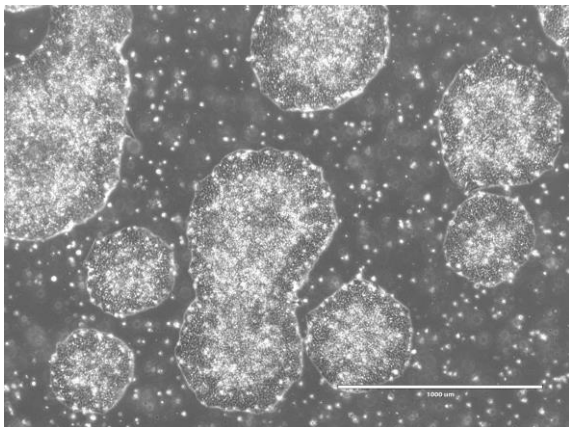
CiRA-j-1320-C: passage-3



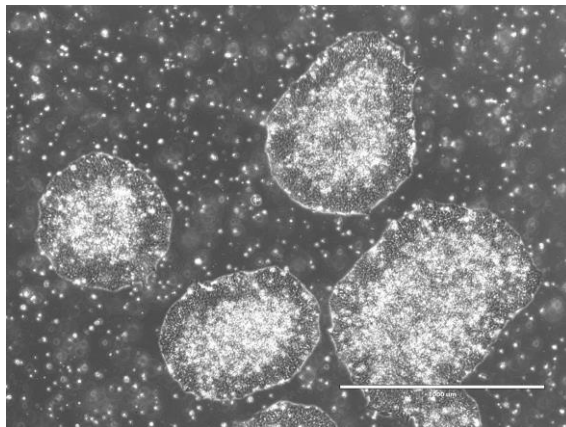
CiRA-j-1320-D: passage-3



CiRA-j-1320-E: passage-3



CiRA-j-1320-F: passage-3



(All images were captured at 4x magnification)